

City of Keizer Service Areas

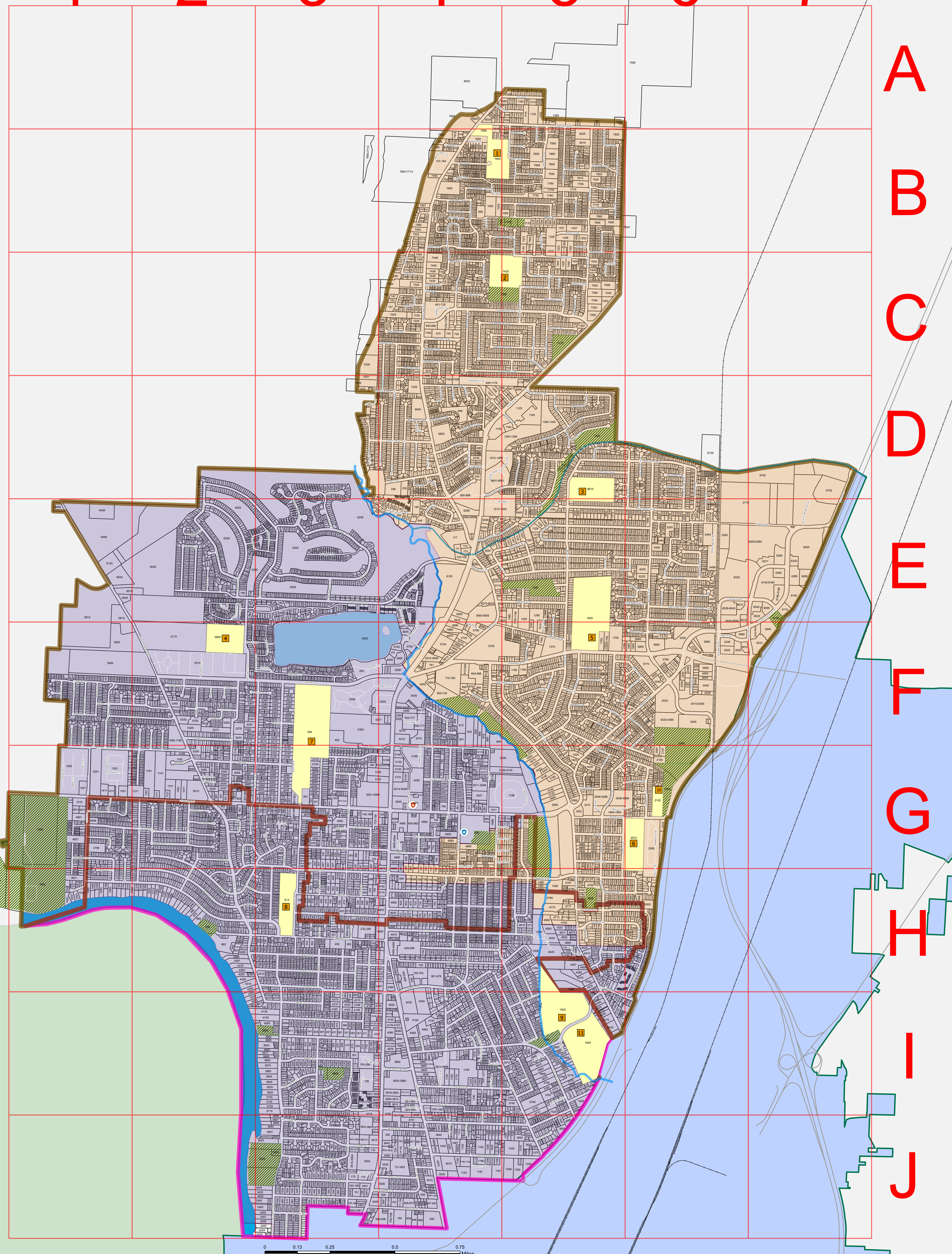
- Services Areas**
- PGE
 - Salem Electric
 - Loren's Sanitation
 - Valley Recycling & Disposal
-
- Grid
 - Keizer Fire and Rescue, G4
 - Keizer Police Office, G4
 - Claggett Creek
 - Labish Ditch
 - Railroad
 - Highway
 - School
 - School Parcel
-
- Lake Labish Ditch
 - Staats Lake
 - Willamette River
 - Parcels
 - Keizer City Limits
 - Salem City Limits
 - Marion County
 - Polk County
-
- School**
- Forest Ridge Elementary School
 - Clear Lake Elementary School
 - Gubser Elementary School
 - Keizer Elementary School
 - Whitaker Middle School
 - Kennedy Elementary School
 - McNary High School
 - Cummings Elementary School
 - Weddle Elementary School
 - Crosshill Christian School
 - Claggett Creek Middle School
 - School Parcel



Version Date: March 2020

The City of Keizer is not liable for incomplete or amended data. Data and analysis presented within (application) are based on best available information, and are expected to be updated on a regular basis. Layers reflect documented resources at the time of data aggregation; and as such, absence of documentation does not necessarily indicate that no data are present. Some data layers may be summarized to preserve the confidentiality of sensitive information. The City of Keizer maintains no responsibility for misuses of the data or the application. This product is provided as is, without warranty. In no event is the City of Keizer liable for damages from the use of this product. This product is subject to license and copyright limitations. Distribution, sale and/or resale is prohibited.

I have read this disclaimer and understand the intent of this system, and therefore fully release the City of Keizer from any liability arising from or related to using the (application) system.



Grid

151 CT NE, C4, D3	ALLAN CT NE, F5	BOULVARD CT, J3	CEDAR CT NE, H3	DENISON GAP LN NE, H5	EASTWOOD CT NE, G2	GARDEN CT NE, H4	HORIZON RIDGE CT NE, D5	KALMA DR NE, F5, G5	LAKELAND CT NE, F4, F5	MARLINE DR NE, J5	MILVERDA CT NE, J3	PARHAMWOOD DR NE, C4	RAMEL AV NE, H10	SANDBAR AV NE, J3	STARBUCK LN NE, B5	STEARNS LN NE, B5	TRAIL AV NE, E4, F4	WELWOOD CT NE, F2
262 AV NE, B4, C4, D3	ANTHONY LN NE, B4	BOULD CT NE, F5	CEDAR PALM CT NE, C4, D4	CELESTE LN NE, G2	EL SEBASTIAN AV NE, B5	GLANDVIEW CT NE, D5	GLORIOUS CT NE, D5	LAUREL AV NE, G5	LAURELWOOD LN NE, D4	MALLORY LN NE, D4	MURPHY AV NE, B5	PARHAMWOOD LN NE, C4	RANNEY CT NE, H1	SANDY DR NE, G5, H4	STARBUCK LN NE, B5	TRENT LN NE, F2	TRUCK LN NE, B5	WELLMORE CT NE, H5
309 LN NE, D3, D4	ANGELA LN NE, G3	BONOLINI AV NE, H5	CHANDONWAY LN NE, B4, D4	CHERRY LN NE, G3	BONOLINI AV NE, H5	CHANDONWAY LN NE, B4, D4	CHERRY LN NE, G3	KATE LN NE, E5, F5	LAURELWOOD LN NE, D4	MARSHBURY LN NE, D4	NEWTON CT NE, G5	PARHAMWOOD LN NE, C4	RENEE LN NE, G4, H4	SANDY DR NE, G5, H4	TRENT LN NE, F2	TRUCK LN NE, B5	WELLMORE CT NE, H5	WELLMORE CT NE, H5
349 LN NE, G3, H3	ANNIE WY NE, F4, G5	BRANDON LN NE, H5	CHANDONWAY LN NE, B4, D4	CHERRY LN NE, G3	BONOLINI AV NE, H5	CHANDONWAY LN NE, B4, D4	CHERRY LN NE, G3	KATE LN NE, E5, F5	LAURELWOOD LN NE, D4	MARSHBURY LN NE, D4	NEWTON CT NE, G5	PARHAMWOOD LN NE, C4	RENEE LN NE, G4, H4	SANDY DR NE, G5, H4	TRENT LN NE, F2	TRUCK LN NE, B5	WELLMORE CT NE, H5	WELLMORE CT NE, H5
351 LN NE, G4	APPLE BROOK AV NE, J3, J4	BRANDON LN NE, H5	CHANDONWAY LN NE, B4, D4	CHERRY LN NE, G3	BONOLINI AV NE, H5	CHANDONWAY LN NE, B4, D4	CHERRY LN NE, G3	KATE LN NE, E5, F5	LAURELWOOD LN NE, D4	MARSHBURY LN NE, D4	NEWTON CT NE, G5	PARHAMWOOD LN NE, C4	RENEE LN NE, G4, H4	SANDY DR NE, G5, H4	TRENT LN NE, F2	TRUCK LN NE, B5	WELLMORE CT NE, H5	WELLMORE CT NE, H5